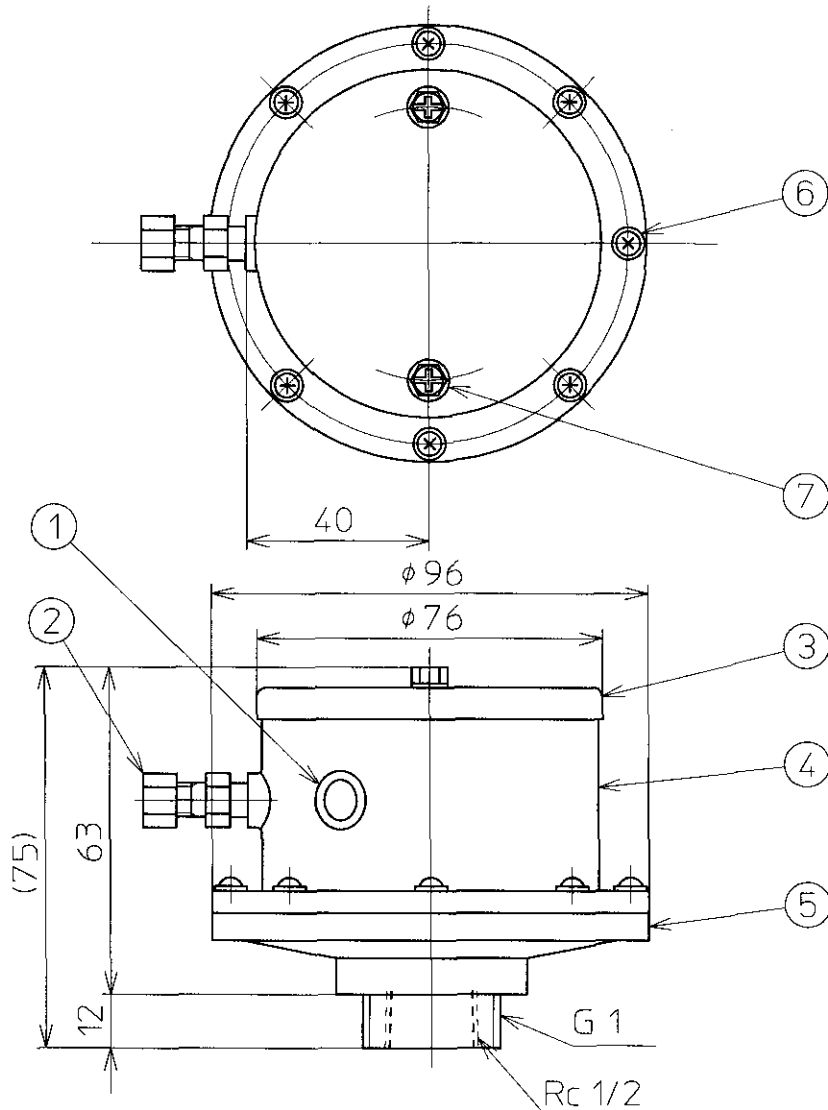


REVISIONS				
REV	DATE	DESCRIPTION	BY	APP. BY
△				
△				
△				

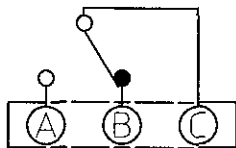


Diaphragm : CR

Cable Inlet : Inside Diameter  $\phi 7$

Contact capacity (Resistive load)	250 V 5 A AC 250 V 0.25 A DC
Operating point	65±10 mm (1/2 B l=300 Pipe)
Release point	50±15 mm (1/2 B l=300 Pipe)

Internal Circuit



P.No.	Name	Qty.	Material
7	Cover bolt	2	Stainless steel
6	Bolt	8	Stainless steel
5	Chamber	1	Phenolic
4	Housing	1	Phenolic
3	Cover	1	304 Stainless steel
2	Pressure balance pipe	1	Brass (C3604BD)
1	Cable bush	1	NBR

DATE 2004-06-08	DR. BY <i>[Signature]</i>
SCALE N.T.S.	CH. BY <i>[Signature]</i>
UNITS MILLIMETERS	APP. BY <i>J. Kawahita</i>

TITLE	OUTLINE DRAWING OF PNEUMATIC LEVEL SENSOR		
MODEL	FP-3		
DRAWING NO.	AS 004307 △		



**NOHKEN INC.**  
OSAKA, JAPAN