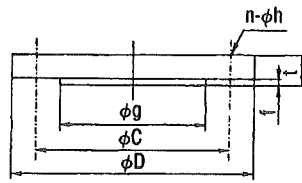


## FLANGE COMPARISON TABLE (mm)

### ■ JIS Flange (JIS B2220 : 2004)

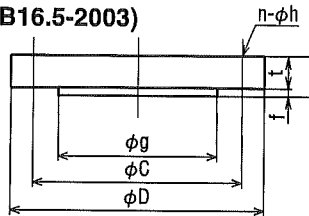


f (in case of Raised Face flange)

For nominal width 1	1
For nominal width 1 1/4 to 5	2

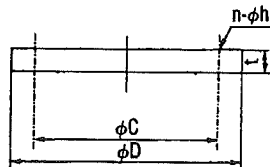
Nominal width	Nominal pres.	JIS 5K (kg/cm <sup>2</sup> )						JIS 10K (kg/cm <sup>2</sup> )					
		D	C	g	t	n-h	Bolts	D	C	g	t	n-h	Bolts
1B	25A	95	75	59	10	4-12	M10	125	90	67	14	4-19	M16
1-1/4B	32A	115	90	70	12	4-15	M12	135	100	76	16	4-19	M16
1-1/2B	40A	120	95	75	12	4-15	M12	140	105	81	16	4-19	M16
2B	50A	130	105	85	14	4-15	M12	155	120	96	16	4-19	M16
2-1/2B	65A	155	130	110	14	4-15	M12	175	140	116	18	4-19	M16
3B	80A	180	145	121	14	4-19	M16	185	150	126	18	8-19	M16
3-1/2B	90A	190	155	131	14	4-19	M16	195	160	136	18	8-19	M16
4B	100A	200	165	141	16	8-19	M16	210	175	151	18	8-19	M16
5B	125A	235	200	176	16	8-19	M16	250	210	182	20	8-23	M20

### ■ ASME (ANSI) Flange (ASME B16.5-2003)



Nominal width	Nominal pres.	150Lb							300Lb						
		D	C	g	t	f	n-h	Bolts	D	C	g	t	f	n-h	Bolts
1B	25A	110	79.4	50.8	12.7	2	4-16	M14xL55	125	88.9	50.8	15.9	2	4-19	M16xL65
1-1/4B	32A	115	88.9	63.5	14.3	2	4-16	M14xL55	135	98.4	63.5	17.5	2	4-19	M16xL70
1-1/2B	40A	125	98.4	73.0	15.9	2	4-16	M14xL65	155	114.3	73.0	19.1	2	4-22	M20xL75
2B	50A	150	120.7	92.1	17.5	2	4-19	M16xL70	165	127.0	92.1	20.7	2	8-19	M16xL75
2-1/2B	65A	180	139.7	104.8	20.7	2	4-19	M16xL75	190	149.2	104.8	23.9	2	8-22	M20xL85
3B	80A	190	152.4	127.0	22.3	2	4-19	M16xL75	210	168.3	127.0	27.0	2	8-22	M20xL90
3-1/2B	90A	215	177.8	139.7	22.3	2	8-19	M16xL75	230	184.2	139.7	28.6	2	8-22	M20xL95
4B	100A	230	190.5	157.2	22.3	2	8-19	M16xL75	255	200.0	157.2	30.2	2	8-22	M20xL95
5B	125A	255	215.9	185.7	22.3	2	8-22	M20xL85	280	235.0	185.7	33.4	2	8-22	M20xL110

### ■ DIN Flange (DIN2527)



Nominal width	Nominal pres.	PN 6 (kg/cm <sup>2</sup> )					PN 10 (kg/cm <sup>2</sup> )				
		D	C	t	n-h	Bolts	D	C	t	n-h	Bolts
DN25		100	75	14	4-11	M10	115	85	16	4-14	M12
DN32		120	90	14	4-14	M12	140	100	16	4-18	M16
DN40		130	100	14	4-14	M12	150	110	16	4-18	M16
DN50		140	110	14	4-14	M12	165	125	18	4-18	M16
DN65		160	130	14	4-14	M12	185	145	18	4-18	M16
DN80		190	150	16	4-18	M16	200	160	20	8-18	M16
DN100		210	170	16	4-18	M16	220	180	20	8-18	M16
DN125		240	200	18	8-18	M16	250	210	22	8-18	M16